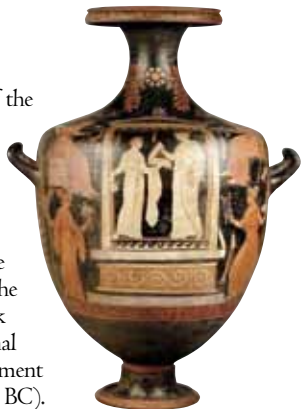


## Room XI. Gallic Bologna

Etruscan Bologna underwent radical upheaval at the start of the 4<sup>th</sup> century BC with the invasion of the Celts (known in Latin literary sources as the Gauls): in successive waves, they occupied large stretches of Italy, north of the Apennines and the Marches Region. Settled in the Bolognese territory was the Boi tribe. A number of its funerary equipments is displayed in the Museum: they are characterized both by the presence of iron weapons of the transalpine tradition and Etruscan banquet tableware.

## Room VI. The Greek Collection

The most representative object of the Palagi Collection is located in this room: the marble head of Athena Lemnia. Created in the first Augustan age, it is a copy of a 5<sup>th</sup> century bronze original by the Greek sculptor Phidias. The other marbles on display are for the most part Roman copies of Greek works. There are also some original works, such as the high relief fragment of an Attic stele (early 4<sup>th</sup> century BC). The ceramic collection, chiefly attic (end of the 6<sup>th</sup>-5<sup>th</sup> centuries BC), is extremely rich, together with numerous examples of Italic wares (end of the 5<sup>th</sup>-4<sup>th</sup> centuries BC).



▲ Apulian red-figure hydria, clay, University Collection, formerly Marsili Collection (350-320 BC)

## Rooms VII and IX. The Roman Collection

The section of Roman antiquities includes ceramic and glass tableware, domestic furnishings, small figured bronzes, oil-lamps and objects for daily use, such as keys, fibulae, needles, spoons, bells, weights and scales. Of great importance are the series of early Christian ivory objects (diptychs and pyxes) decorated with sacred and profane motifs (5<sup>th</sup> century AD). The marble sculptures, which include reliefs, statues, portraits of public and private personages, document the activity of the Roman workshops during the Imperial Age. Also noteworthy are the numerous examples of gold and silver coins (1<sup>st</sup> century BC - late 4<sup>th</sup> century AD).

## Room VIII. The Etrusco-Italic Collection

In this section noteworthy are the "buccheri" (Etruscan earthenware) from Chiusi, the Etruscan urns in terracotta and marble and the mirrors worked in relief and carved, including the famous "patera cospiana" (mid-5<sup>th</sup> century BC), the name of which is derived from that of the collector Ferdinando Cospi, its first owner.

The Museum takes pride in important collections that are not yet on display. Thanks to a renovation project presently underway, they will soon be available to the public. The collection of materials from the Roman colony of Bononia, as well as an extremely large numismatic collection containing about 100.000 pieces of coins, medals and coin-stamps will be included.



COMUNE  
DI BOLOGNA

Istituzione  
Musei Civici



MUSEO CIVICO  
ARCHEOLOGICO  
BOLOGNA

## Archaeological Museum of Bologna

Via dell'Archiginnasio 2

I-40124 Bologna

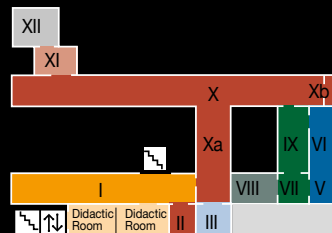
tel. +39 051 2757211

fax +39 051 266516

e-mail: mca@comune.bologna.it

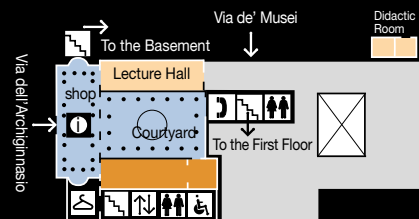
### FIRST FLOOR

- I - Prehistory
- II - Prehistoric Comparisons
- III - Verucchio
- V-VI - The Greek Collection
- VII - Greek and Roman Sculptures
- VIII - The Etrusco-Italic Collection
- IX - The Roman Collection
- X - Etruscan Bologna
- XI - Gallic Bologna
- XII



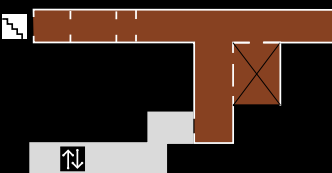
### GROUND FLOOR

- The Plaster Cast Collection
- The Epigraphic Collection
- Temporary Exhibition Hall



### BASEMENT

- The Egyptian Collection



## Opening times:

Tuesday-Friday 9am – 3pm.

The 1st floor closes at 2.30pm

Sundays and Holidays:

10am – 6.30pm.

Closed: Monday (Holidays

excepted), 25th December,

1st January and 1st May.

For ticket prices and updates on timetables and Museum activities, please consult the following website:

[www.comune.bologna.it/museoarcheologico](http://www.comune.bologna.it/museoarcheologico)

# Archaeological Museum of Bologna



The Archaeological Museum is located in the old Ospedale della Morte, an historic building dating from the 15<sup>th</sup> century. Inaugurated in 1881, its collections were created starting with those of the University (Aldrovandi, Cospi, Marsili and Lambertini) and that of Pelagio Palagi (1861). A conspicuous archaeological patrimony from excavations carried out in Bologna and the surrounding territory was added to them.

## BASEMENT

### The Egyptian Collection



↑ Limestone relief with scene representing work in the fields, from Saqqara, tomb of Horemheb, XVIII dynasty; reign of Tutankhamon (1332-1323 BC)



← Statue of Neferhotep I, Fayyum (?); XIII dynasty, reign of Neferhotep I (c. 1759-1640 BC)

The Museum contains one of the most important Egyptian collections in Europe. The exhibition begins with the famous limestone reliefs of the tomb of General Horemheb from Saqqara (reign of Tutankhamon, 1332-1323 BC), who later became the last Pharaoh of the XVIII Dynasty. The exhibit is ordered chronologically. It starts with the Old Kingdom and leads up to the Ptolemaic-Roman Period and includes vases, stelae, brightly coloured wooden sarcophagi, various small funerary statues (*ushabti*), a rich nucleus of small votive bronzes, and other grave furnishings. Special mention

should be made of some fully round sculptures, in particular the statue of an anonymous official from the IV dynasty (2640-2520 BC) and the large statue of a well-known dignitary named Uahibra (XXVI dynasty, 664-525 BC) as well as numerous examples of royal statuary that reproduce the idealized features of Pharaohs Neferhotep I, Thutmosi III, Amenhotep III or IV and Apries.



Head of Amenhotep III (1390-1353 BC) or Amenhotep VI (1353-1336 BC)

## GROUND FLOOR

### Entrance hall and Courtyard. Epigraphic Collection

Displayed in both the entrance hall and courtyard is the Epigraphic Collection, which includes mainly Roman burial monuments and stelae from the city and its neighbours, dating from the mid-1<sup>st</sup> century BC to the mid-2<sup>nd</sup> century AD, together with a series of milestones from the *Via Aemilia*. Among these is the armoured *torso* belonging to a statue of Nero (mid-1<sup>st</sup> century AD) found in via de' Carbonesi and coming from the Roman city theatre.



← Marble torso of Nero, Bologna, via de' Carbonesi (mid-1<sup>st</sup> century AD)

### The Plaster Cast Gallery

The Plaster Cast Gallery is located on the ground floor: it contains a collection of plaster copies of famous Greek and Roman sculptures.

## FIRST FLOOR

### Room I. Prehistory in the Bologna area

The visit to the first floor begins with the prehistoric section, which documents the presence of man in the Bologna territory from the Lower Palaeolithic (800,000 years ago) to the brink of the Historical Age (Late-Bronze Age, 10<sup>th</sup> century BC). Organised chronologically, the exposition dedicates ample space to materials found in excavations carried out between the end of the 19<sup>th</sup> and the beginning of the 20<sup>th</sup> centuries, integrated with a number of objects found more recently.

### Room II. Prehistoric Comparisons

Alongside the large hall dedicated to the pre-protolithic period, there is a small room containing material from the collection of the illustrious geologist Giovanni Capellini. It was donated to the Museum in 1895 and enriched by other minor collections.

### Room III. The Etruscans in Romagna: Verucchio

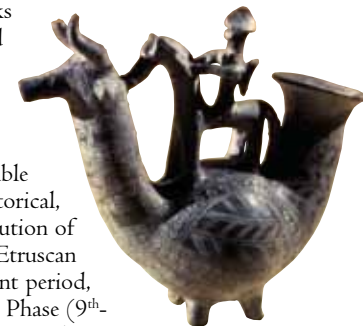
Shown here are the exceptional funerary furnishings of Lippi Tomb 85, from Verucchio (Rimini), an important Etruscan cultural centre of the Villanovan period in Emilia Romagna. Quite noteworthy are the fittings and wooden furniture (small tables for offerings, earthenware, a throne and foot-rest) and other organic materials, such as the straw helmet decorated with bronze disks (1<sup>st</sup> half of the 7<sup>th</sup> century BC).

### Rooms XA and X. Etruscan Bologna

The two large galleries at the centre of the floor contain materials from the Etruscan civilization in Bologna (9<sup>th</sup>-4<sup>th</sup> centuries BC), amply documented thanks to the excavations carried out since the beginning of the second half of the 19<sup>th</sup> century.

The numerous funerary furnishings displayed enable reconstruction of the historical, social and economic evolution of the centre of Felsina, or Etruscan Bologna. The most ancient period, known as the Villanovan Phase (9<sup>th</sup>-8<sup>th</sup> centuries BC) is documented by cremation tombs inside terracotta or laminated bronze ossuaries. Splendid examples of the subsequent "Orientalizing" period (7<sup>th</sup> century BC)

include the funerary stelae decorated with depictions of fantastic animals. At the beginning of the mid-6<sup>th</sup> century BC, Felsina became a true city, surrounded by its necropolises. Sandstone stelae with bas relief decorations marked the tombs. Exquisitely worked Attic ceramics and bronze vases were deposited in the burial sites. Among them is



↑ Terracotta askos, Bologna, Benacci necropolis, tomb 525 (end of the 8<sup>th</sup> century BC)



← Bronze situla, Bologna, Certosa necropolis, tomb 68 (first half of the 6<sup>th</sup> century BC)

the famous Certosa Situla (first half of the 6<sup>th</sup> century BC), a refined laminated bronze container with embossed decoration, used as the cinerary urn of a female tomb.