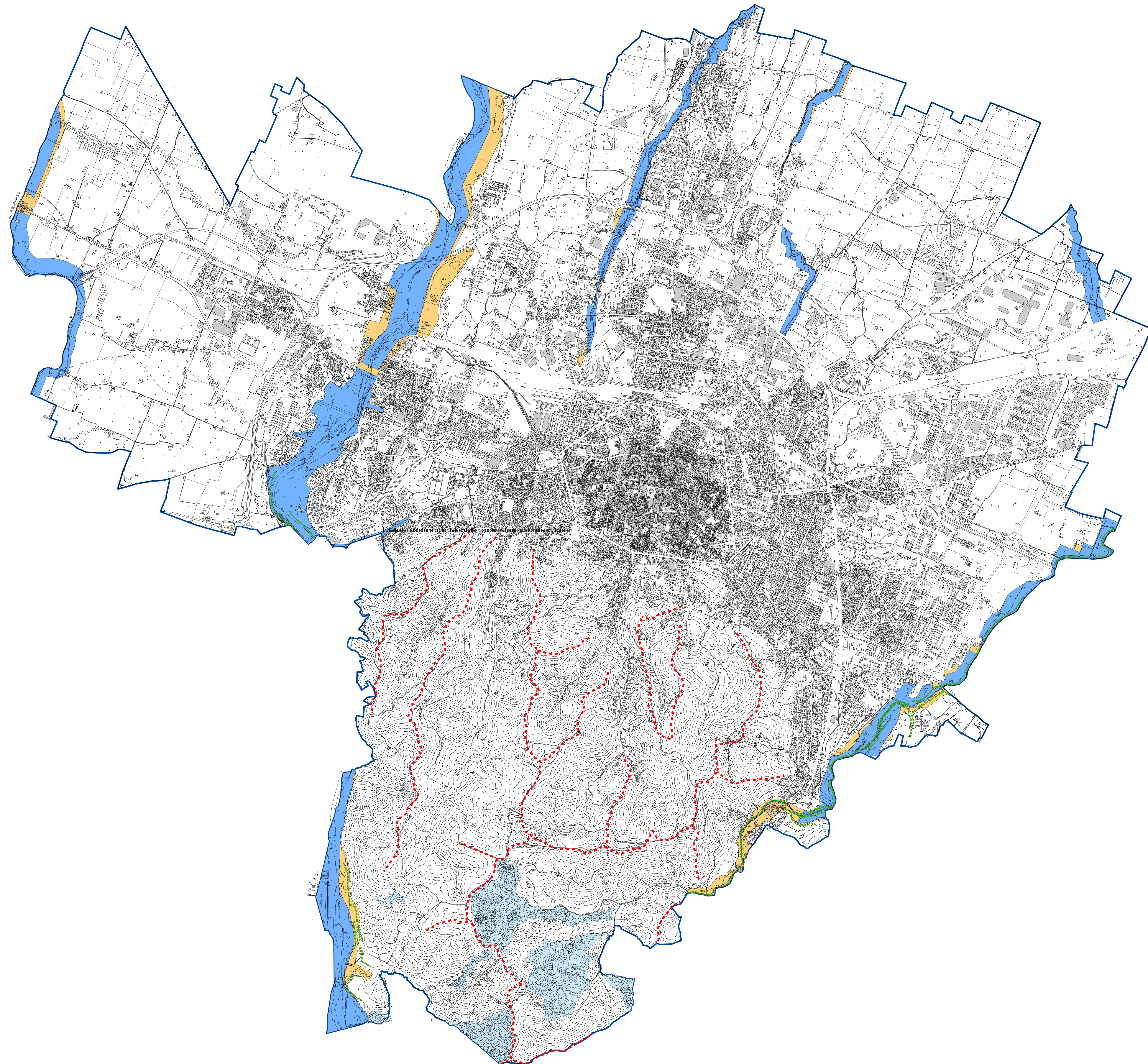
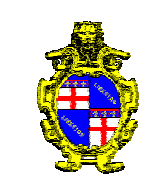
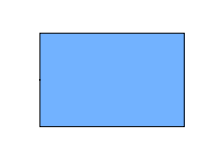
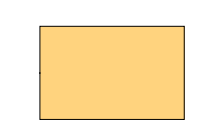

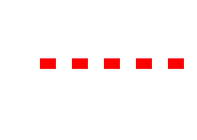



AREA URBANISTICA, AMBIENTE, MOBILITA'
SETTORE AMBIENTE E VERDE URBANO
Unità Intermedia Qualità Ambientale
Ufficio Suolo e Attività Estrattive



Legenda

-  FASCE DI TUTELA FLUVIALE
-  FASCE DI PERTINENZA FLUVIALE
-  CALANCHI
-  CRINALI
-  SCARPATE DI TERRAZZO FLUVIALE



1:20.000